

# HIGH IMAGE CLASS A BUILDING WITH VIEWS



## VALLEVISTA

 nearon

515 MARIN STREET | THOUSAND OAKS | CALIFORNIA  
Full Building and Landscape Renovations Recently Completed

 LEE &  
ASSOCIATES  
COMMERCIAL REAL ESTATE SERVICES



### PROPERTY HIGHLIGHTS

- 4 Story Class "A" Landmark Office Building Consisting of 62,770 RSF
- On-Site Management Office
- Private Balconies with Amazing Views of the Conejo Valley
- Major Renovations Recently Completed including Entirely New Common Area Finishes, Landscaping & Additional Parking
- Walking Distance to The Oaks Mall, Janss Marketplace & Dozens of other Retail & Hospitality Amenities
- Fiber Available
- On Site Secured Storage Available
- Immediate Access to the 23 & 101 Freeways
- Up to 3.9/1000 Reserved Covered & Free Surface Parking Available
- Reserved Covered Stall \$60 per Month

PENTHOUSE AVAILABILITY

SUITE	SQ. FT.	RATE	DIVISIBLE	AVAILABILITY
304	±4,064	\$2.45 FSG	No	Available Immediately

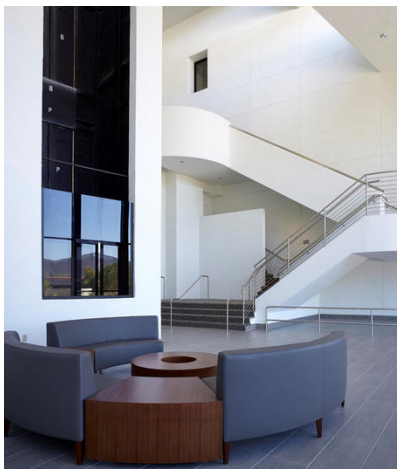
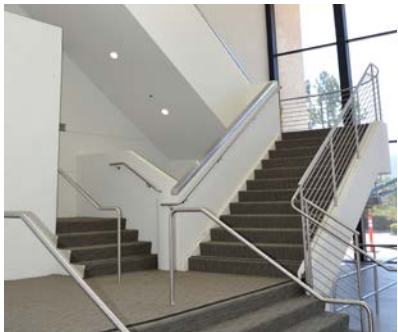


\*Not to scale



# VALLEVISTA

515 MARIN STREET | THOUSAND OAKS | CALIFORNIA



For more information please contact:

**MARK LEONARD**

PRINCIPAL

818.449.4414

[mleonard@lee-re.com](mailto:mleonard@lee-re.com)

License ID #01031863

**JARED SMITS**

PRINCIPAL

818.444.4986

[jsmits@lee-re.com](mailto:jsmits@lee-re.com)

License ID #01839532

 nearon

 **LEE &  
ASSOCIATES**

COMMERCIAL REAL ESTATE SERVICES

Lee & Associates® - LA North/Ventura, Inc.

Corporate ID #01191898

A Member of the Lee & Associates®

Group of Companies

26050 Mureau Rd., Suite 101, Calabasas, CA 91302

P:818.223.4388 F:818.591.1450

[www.lee-associates.com](http://www.lee-associates.com)