

FOR LEASE

[www.cbre.com/515tower](http://www.cbre.com/515tower)

# 515 TOWER

515 EAST 100 SOUTH :: SALT LAKE CITY, UTAH

## AMENITIES MAP



CBRE | 222 South Main | 4th Floor | Salt Lake City, Utah | [www.cbre.com/slc](http://www.cbre.com/slc)

© 2013 CBRE, Inc. This information has been obtained from sources believed reliable. We have not verified it and make no guarantee, warranty or representation about it. Any projections, opinions, assumptions or estimates used are for example only and do not represent the current or future performance of the property.

**CBRE**

FOR LEASE

[www.cbre.com/515tower](http://www.cbre.com/515tower)

# 515 TOWER

515 EAST 100 SOUTH :: SALT LAKE CITY, UTAH



## FEATURES

- **\$18.00-\$22.00 / RSF, FS**
- 881 - 6714 RSF currently available
- Full floor availability (5th floor)
- Stunning panoramic views of the Salt Lake Valley and Wasatch Mountains
- Recently renovated lobby and award winning architectural design
- Convenient access to downtown and the suburbs via I-215 and I-15
- Close proximity to TRAX, Salt Lake City's light rail system
- Fully equipped fitness center with locker rooms and showers available at no cost to tenants
- Parking Ratio: 3.5 / 1,000 RSF leased at no cost to tenant
- Energy Star Certified - the national mark of excellence in energy performance and environmental conservation
- New emergency generator (200 kW) in place



**FOR MORE  
INFORMATION  
PLEASE  
CONTACT**

**Eric Smith**

First Vice President  
+1 801 869 8008  
[eric.smith@cbre.com](mailto:eric.smith@cbre.com)

**Kreg Peterson**

Vice President  
+1 801 869 8092  
[kreg.peterson@cbre.com](mailto:kreg.peterson@cbre.com)

**Laurie Adair**

Associate  
+1 801 869 8009  
[laurie.adair@cbre.com](mailto:laurie.adair@cbre.com)

**CBRE**



AVAILABLE  
FOR LEASE

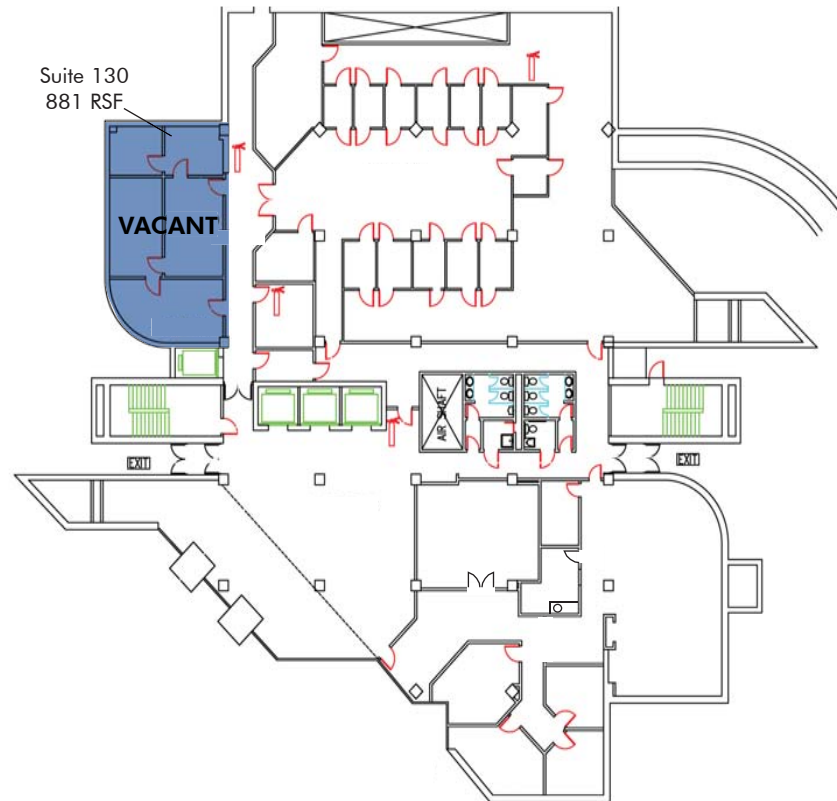
# 515 TOWER

515 EAST 100 SOUTH :: SALT LAKE CITY, UTAH

[www.cbre.com/515tower](http://www.cbre.com/515tower)

## FLOOR PLANS

### 1ST FLOOR 881 SF VACANT



### 6TH FLOOR 6,714 SF

